

FIXED CONE VALVES

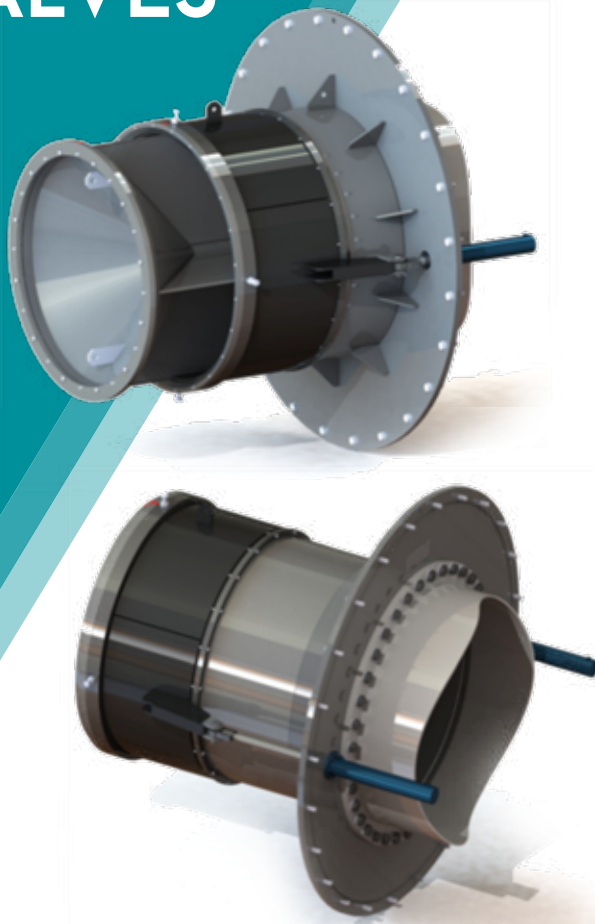


VORTEX HYDRA
innovation & engineering

since 1967



Your reliable partner for
**HYDRAULIC
WORKS**



COMPONENT

OFFERED MATERIAL

Valve circular body
(including upstream
flange, cylindrical
portion, reinforcing
vanes and cone)

Carbon Steel
type S355J2 (or equivalent)

Sliding surfaces

Stainless steel
type AISI316 (or equivalent)

Main seal clamping ring

Stainless steel
type AISI316L (or equivalent)

Movable sleeve

Carbon Steel
type S355J2G3 (or equivalent)

Main seal counter seat

Stainless steel
type AISI316L (or equivalent)

Bolts for seal fastening

Stainless steel
type A2-70 (or equivalent))

Main seal

NBR (or alternative type of rubber)

The Fixed Cone Valves are mainly used in applications that require water to be freely discharged into the atmosphere at controlled rates. This type of valve dissipates enormous amounts of energy by breaking down the water into a large, hollow expanding jet.

The Fixed Cone Valves are designed to operate at variable controlled flow rates between fully open and fully closed without creating damaging vibrations.

Although the primary objective of this type of valve is for free discharge of water into the atmosphere, Fixed Cone Valves can also be used for submerged discharge operations.

In the event that site conditions require concentration of the water outflow, Vortex Hydra also design and manufacture suitable Concentration Hoods.

FLEXIBLE AND CUSTOM MADE DESIGN SOLUTIONS

- The valve dimensions can be adapted to fit with the existing site conditions;
- Sealing System: rubber seated in metal.



VORTEX HYDRA
innovation & engineering

since 1967



Your reliable partner for
**HYDRAULIC
WORKS**

VERSATILE OPERATING SYSTEM

- A) #2 hydraulic twin cylinders double action:** opening and closing by pressurized oil;
- B) #1 electric** motor coupled with gearboxes and lateral screws.

POSSIBILITY TO SUPPLY A FULL SET OF ACCESSORIES

- Concentration hood;
- Upstream connection pipe;
- Hydraulic Power unit;
- Electrical Cabinet.

VORTEX HYDRA'S RANGE OF APPLICATION

- Diameter up to DN3000;
- Pressure up to PN40.

All phases of the engineering design and fabrication through to final testing are undertaken by Vortex Hydra in compliance with UNI EN ISO 9001 Quality Management System.



UNI EN ISO 9001:2015
UNI EN ISO 14001:2015



Your reliable partner for
**HYDRAULIC
WORKS**



Technology for
**CONCRETE
PRODUCTS**



VORTEX HYDRA
innovation & engineering

since 1967

VORTEX HYDRA S.R.L. ITALY • Via Argine Volano 355 • 44034 Fossalta di Copparo (FE) ITALY
+39 0532 879411 • f. +39 0532 866766 • vh.sales@vortexhydra.com

www.vortexhydra.com